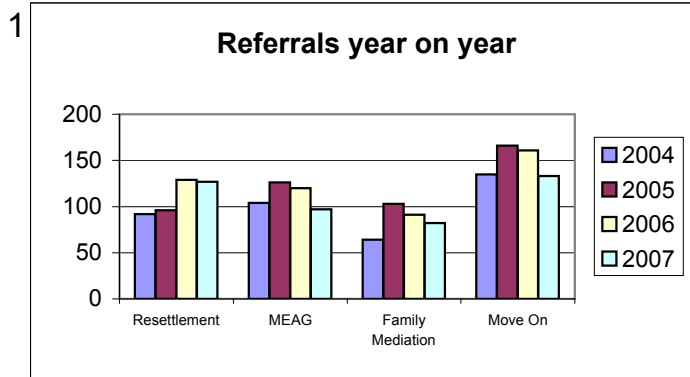
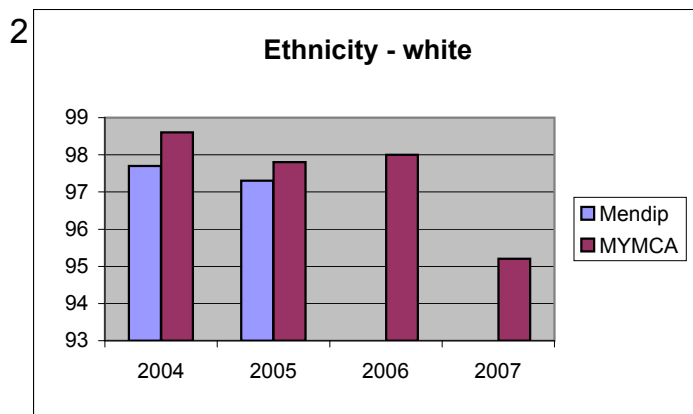


In these graphs Mendip and MDC have the same meaning i.e. the geographical area within the Mendip District Council boundary
 MYMCA - means Mendip YMCA's clients

Numbers of referrals to our schemes over the past 4 years

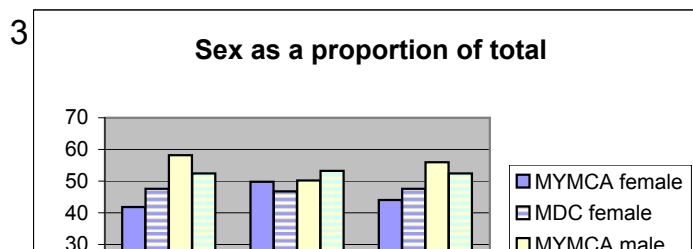


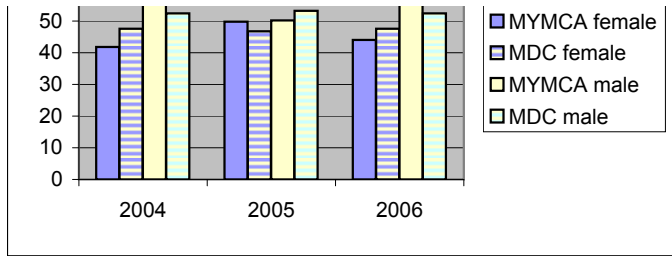
A comparison of ethnicity declared as "white" amongst referrals to MYMCA, and government statistics for the Mendip population



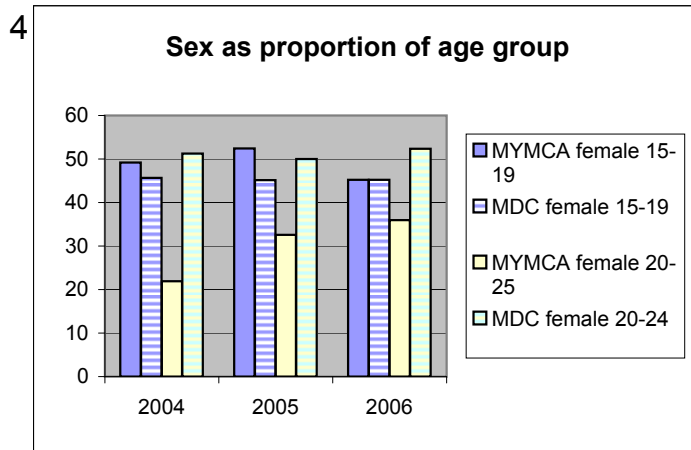
Figures for the Mendip area are not available for 2006 and 2007 at the time of production

The proportion of male and female referrals to MYMCA compared to the Mendip population

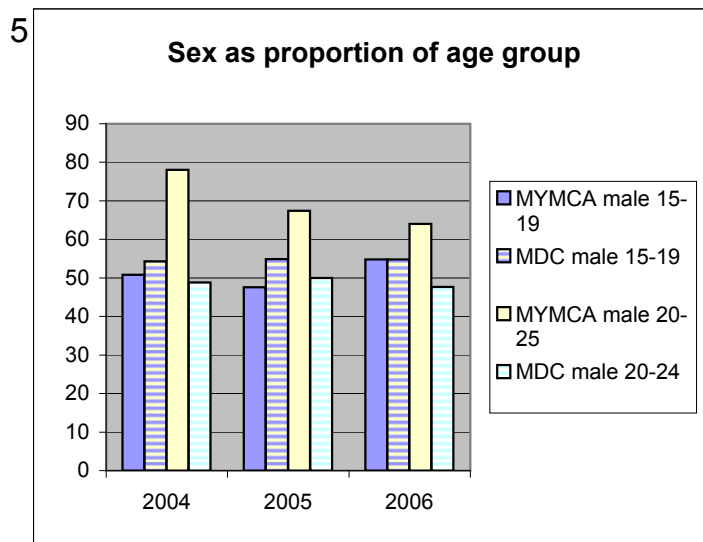




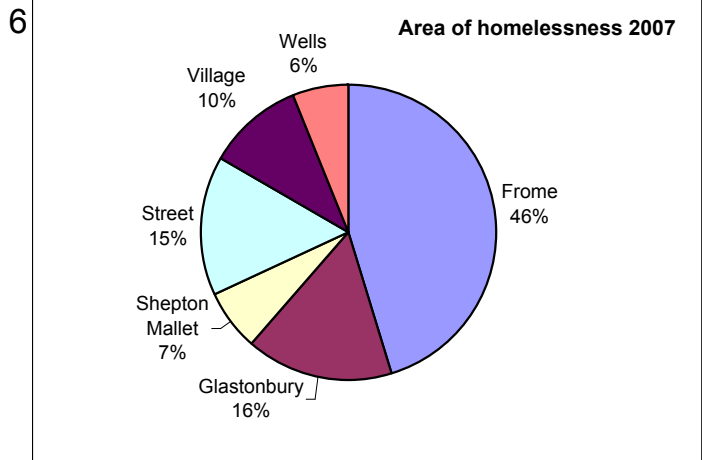
By age group the proportion of female referrals to MYMCA compared to the Mendip population



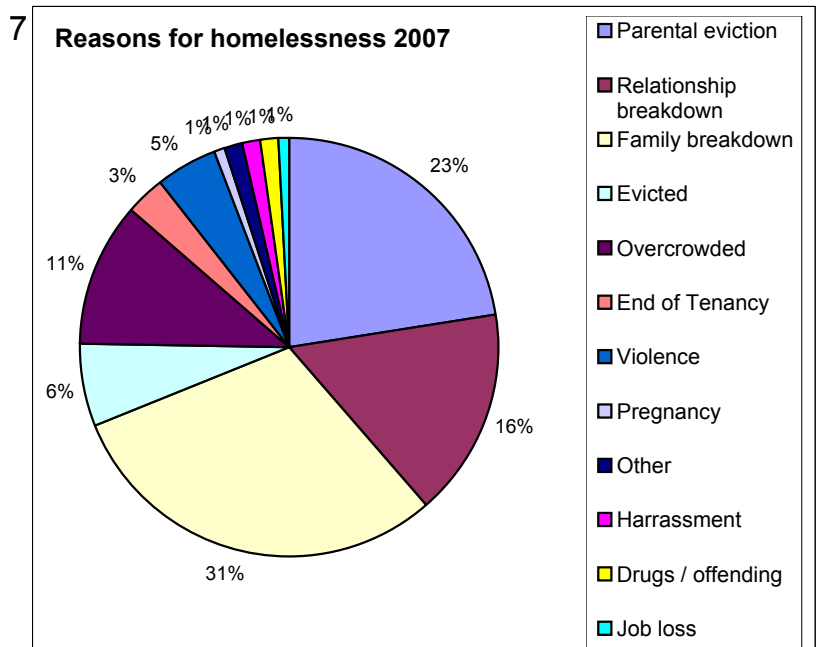
By age group the proportion of female referrals to MYMCA compared to the Mendip population



Area of homelessness of MYMCA clients in 2007



Reasons for homelessness of MYMCA clients in 2007



8 Record of successful outcomes for MYMCA clients by scheme in 2007

MEAG	73%
Resettlement	90%
Family Mediation	81%